



# GAT MONTHLY MEMBERSHIP PROGRESS REPORT

Results as of: 5/31/2021

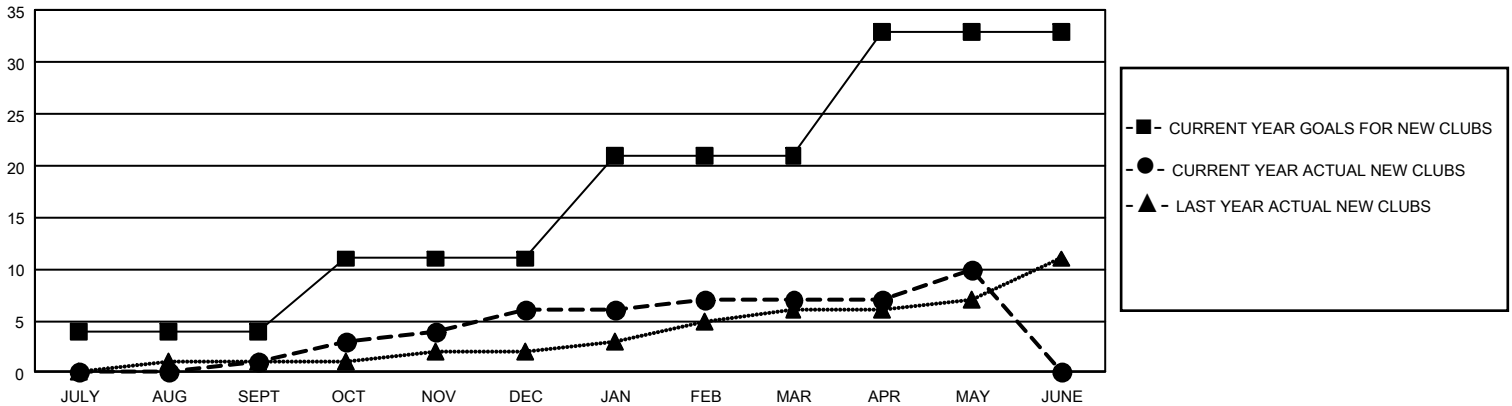
## GMT Constitutional Area 1, Group F

REPORT DOES NOT INCLUDE CLUBS IN UNDISTRICTED AREAS.

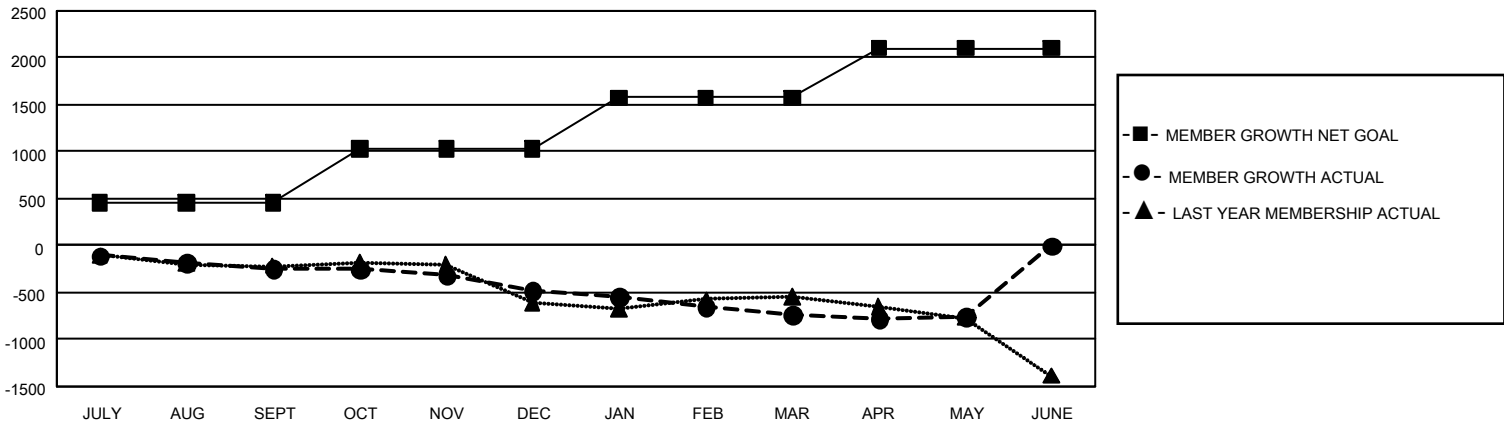
| Clubs                 |               |           |               |
|-----------------------|---------------|-----------|---------------|
| RESULTS FOR 2020-2021 |               |           |               |
| QUARTER               | NEW CLUB GOAL | NEW CLUBS | DROPPED CLUBS |
| JULY/AUG/SEPT         | 12            | 1         | 7             |
| OCT/NOV/DEC           | 21            | 5         | 6             |
| JAN/FEB/MAR           | 30            | 1         | 12            |
| APR/MAY/JUNE          | 36            | 3         | 1             |

| Members               |                        |                      |  |
|-----------------------|------------------------|----------------------|--|
| RESULTS FOR 2020-2021 |                        |                      |  |
| QUARTER               | MEMBER GROWTH NET GOAL | MEMBER GROWTH ACTUAL | DROPPED MEMBERS ACTUAL (including transfers) |
| JULY/AUG/SEPT         | 451                    | 414                  | 571  |
| OCT/NOV/DEC           | 576                    | 558                  | 740  |
| JAN/FEB/MAR           | 550                    | 302                  | 504  |
| APR/MAY/JUNE          | 528                    | 408                  | 395  |

GOALS AND ACTUAL NEW CLUBS CUMULATIVE



GOALS AND ACTUAL MEMBERS CUMULATIVE



DROPPED CLUBS: 26

378 CLUBS OF 904 ADDED 1 OR MORE NEW MEMBERS

GENDER DISTRIBUTION

MALE 14,618 (61.95%)  
FEMALE 8,977 (38.05%)

DROPPED MEMBERS

|                |              |
|----------------|--------------|
| DECEASED       | 401          |
| CLUB CANCELLED | 176          |
| OTHER          | 1,633        |
| <b>TOTAL</b>   | <b>2,210</b> |

[CLICK HERE FOR CUMULATIVE MEMBERSHIP DATA](#)

TOTAL FAMILY UNIT MEMBERS 4,191

FAMILY MEMBERS PAYING HALF DUES 2,179